

TB42

STRAIGHT TELESCOPING BOOM



POWER IN EXPERIENCE

- 40% less lifetime maintenance cost than leading competitors
- 93% lifetime ROI
- Excellent serviceability

Snorkel



TB42

STRAIGHT TELESCOPING BOOM

PLATFORM

Height 42'	(12.8 m)
A. Size	30" x 60" (76 x 152 cm)
Capacity	500 lbs (227 kg)
Construction	Steel

MACHINE DIMENSIONS

B. Stowed Height	7'9-1/2" (2.3 m)
C. Stowed Length	23'6-1/4" (7.2 m)
D. Wheelbase	8' (2.4 m)
Width	7'11-1/2" (2.4 m)
Ground Clearance	10" (25 cm)
Weight	10,500 lbs (4763 kg)
Tire Size	12 x 16.5 (pneumatic)
Horizontal Reach	33' (10.1 m)

PERFORMANCE

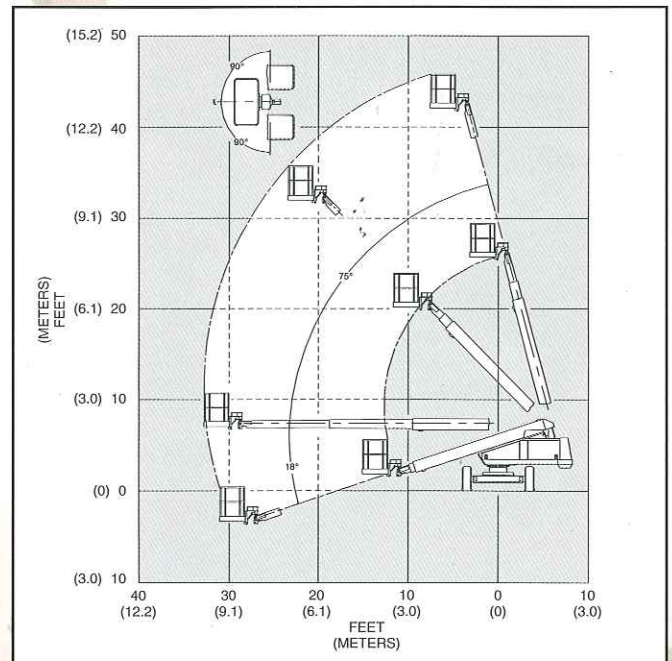
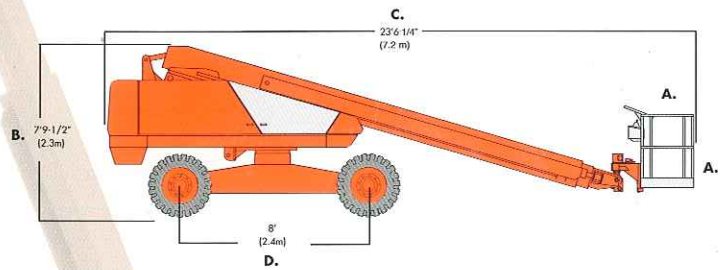
Cummins	Power Source	Gas or Diesel
	Fuel Capacity	20 gal (75.7 L)
	Hydraulic tank cap	25 gal (94.6 L)
	Drive speed	
	Elevated	Creep
	Stowed	3 mph (4.8 kph)
	Gradeability	25%

OPTIONS

- | | |
|------------------------------|---|
| • Operator horn | • Tow kit |
| • Platform control box cover | • Four wheel drive |
| • Platform work lights | • Platform - 42
92" x 30" (234 x 76 cm) |
| • Flashing light on boom | Aluminum or steel |
| • Swinging gate | • High Capacity - 420
92" x 30" (234 x 76 cm) |
| • Sandblast protection kit | Aluminum Platform |
| • Driving lights | Capacity 650 lbs;
295 kg |
| • Dual Fuel | • Cold weather start kit
60" x 30" (152 x 76 cm) |
| • Spark arrestor muffler | Aluminum Platform |
| • Cold weather start kit | Capacity 700 lbs;
318 kg |
| • AC Generator | |
| • Drive motion alarm | |
| • Foam filled tires | |

STANDARD FEATURES

- 360 degree continuous turntable rotation
- Proportional controls
- Printed circuit board with on-board LED diagnostics
- 180 degree hydraulic platform rotation
- 12 volt emergency operated power
- Manual bleed down valve
- Engine anti-restart
- Oil level/temp gauges
- Driveable at full height
- Tilt alarm
- 125 volt GFCI AC outlet
- Aluminum upper booms
- Hour meter
- High engine temp/low oil pressure shut down
- Lifting lugs
- Tie down lug



DANGER: Models described in this brochure are NON-INSULATED and do not provide electrocution protection from contact with or close proximity to energized conductors which is pointed out on decals and placards attached to the machine.

Only qualified and trained operators are to be authorized to use and operate a work platform. Aerial work platforms must be elevated only on firm, level surface. Products in this brochure comply with applicable ANSI Standards.

This literature is for illustrative purposes only. Consult Operating Maintenance and Parts Manuals for proper procedures. Specifications may vary and are subject to change without notice or obligation.

Snorkel

An ISO 9001 Registered Company
Printed in U.S.A. TB42 10-02

Manufacturing Plant

2009 Roseport Road
Elwood, KS 66024
800-255-0317 Toll Free
785-989-3000 Office
785-989-3070 Fax

Australia

26 Redfern Road
Wetheril Park NSW
2164 Australia
(02) 9725 4000 tel
(02) 9609 3057 fax