

# A80J/A85JRT

## ARTICULATED BOOM LIFTS



- The ultimate diesel articulated booms
- Excellent aerial manoeuvrability with “up & over” capabilities
- Powerful 4 wheel drive and 4 wheel steer
- Smooth, precise, easy to use controls
- Simple to maintain and service

 **snorkel**  
[www.snorkellifts.com](http://www.snorkellifts.com)

# ARTICULATED BOOM LIFTS

# A80J/A85JRT

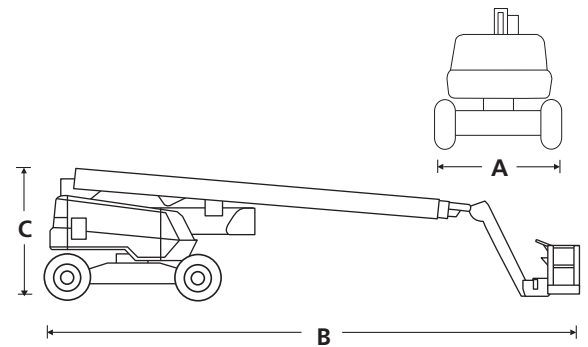
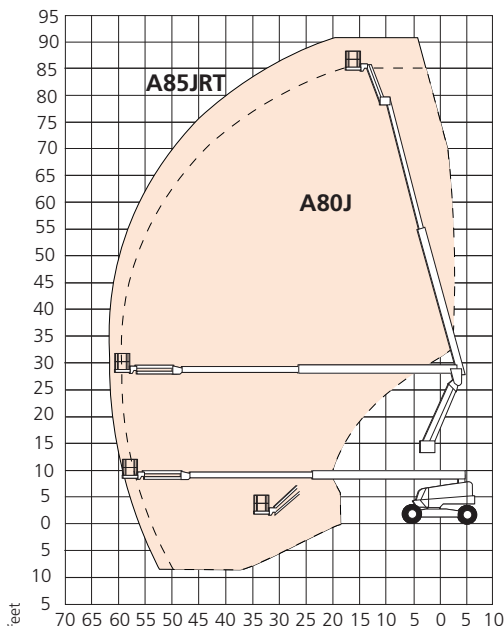
DIMENSIONS	A80J	A85JRT
Max. working height	85 ft 11 in	90 ft 6 in
Max. platform height	79 ft 11 in	84 ft 6 in
Max. horizontal reach	59 ft 5 in	61 ft 11 in
Riser height	27 ft 10 in	27 ft 10 in
Platform size	3 ft x 8 ft	3 ft x 8 ft
Overall width (A)	8 ft 6 in	8 ft 6 in
Overall length (B)	32 ft 2 in	41 ft 2 in
Stowed height (C)	9 ft 10 in	9 ft 10 in
Ground clearance	13 in	13 in

PERFORMANCE	A80J	A85JRT
Platform capacity (SWL)	500 lbs	500 lbs
Max. drive height	79 ft 11 in	84 ft 6 in
Max. drive speed (stowed)	3 mph	3 mph
Max. drive speed (elevated)	0.6 mph	0.6 mph
Jib length	5 ft	5ft 10in
Jib working arc	140 °	135 °
Jib rotation	n/a	140 ° side to side
Platform rotation	150°	150 °
Superstructure rotation	continuous	continuous
Gradeability	30%	30 %
Inside turning radius	7 ft 10 in	7 ft 10 in
Tires	15 x 625 loader lug foam filled	
Controls	proportional joystick	
Drive system	4 wheel drive	

POWER	A80J	A85JRT
Power source	Deutz F4L-2011 (64hp) air cooled engine Cummins 3.3 (65hp) liquid cooled engine GM 3L Gas/Dual Fuel liquid cooled engine	

WEIGHT	A80J	A85JRT
Weight	36,800 lbs	38,580 lbs

## WORKING ENVELOPE



## STANDARD FEATURES

- 5 ft 9 in, 135 ° jib, 140 ° side to side rotation (A85JRT)
- Hydraulic powered platform rotation
- 4 wheel drive
- 4 wheel steer, including crab steer
- Foam filled lug tires
- Horn
- Flashing amber lights
- Power line to platform
- Driveable at full height
- Drive motion alarm
- ANSI compliant

## OPTIONS

- Special paint colors
- Hydraulic generator 12kW and 2kW
- Cold weather package
- Extreme cold weather package
- Light package
- Cummins engine
- GM engine
- Extreme environment package
- Aircraft package
- Tow packages
- Glazier package
- 12k Generator/welder package
- Environmental green oil
- CSA compliant

**snorkel** [www.snorkellifts.com](http://www.snorkellifts.com)

P.O. Box 1160  
St. Joseph, MO 64502-1160, USA  
Tel: 1 (785) 989-3000  
Toll-free: 1 (800) 255-0317  
Sales Fax: 1 (785) 989-3070  
Parts Fax: 1 (785) 989-3077