

ROUGH TERRAIN TELESCOPIC BOOMS



HT67 RTJ 0 HT67 RTJ PRO

Outstanding performance

- 73 ft working height
- 60 ft maximum outreach

Optimal productivity

- Best lifting speed 56 sec
- Fully proportional and simultaneous movements

Best comfort and safety feeling

- Rigid boom
- Single control for both steering axles

Optimized maintenance time

- Easy access to all components
- Easy boom maintenance
- Exclusive modular basket, quick and easy to repair
- Haulotte Activ'Screen (on board diagnostic)



Haulotte

www.haulotte-usa.com



HT67 RTJ 0 / RTJ PRO



ROUGH TERRAIN TELESCOPIC BOOMS

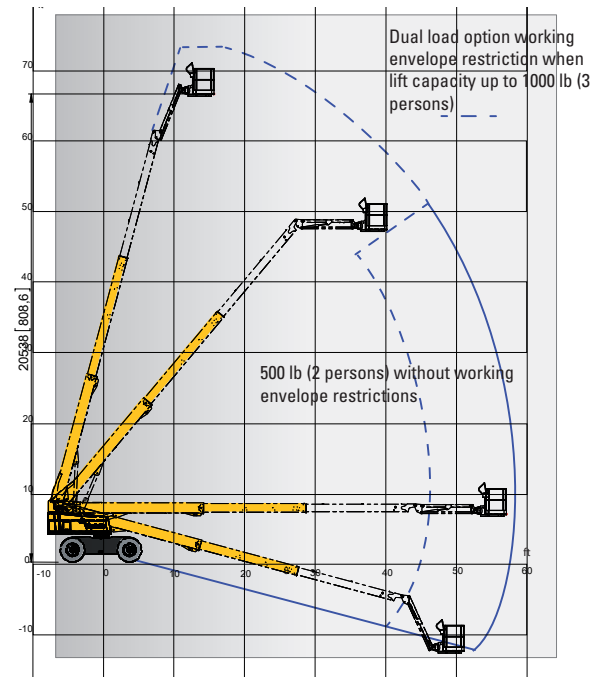
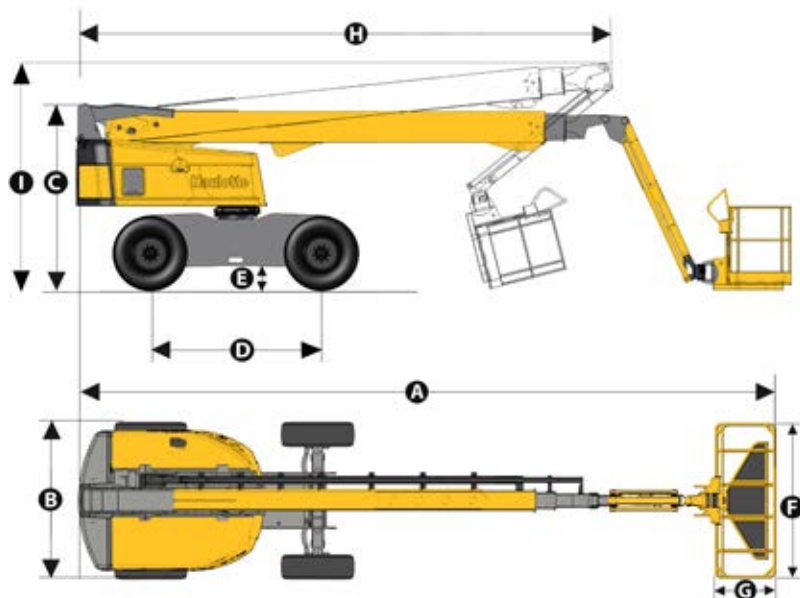


TECHNICAL DATA

HT67 RTJ 0 2WS

HT67 RTJ PRO 4WS

Working height	73 ft	
Platform height	67 ft	
Horizontal outreach	60 ft 5 in	
Below ground reach	13 ft 1 in	
Lift capacity	500 lbs (2 persons)	
F x G Platform size	8 ft x 3 ft	
A Length	34 ft 3 in	
H Length - storage	25 ft 8 in	
B Overall width	8 ft 1 in	
C Height - stowed	8 ft 11 in	
I Height - storage	10 ft 10 in	
Vertical jib rotation	133° (+68/-65)	
Platform rotation	180° (+90/-90)	
Boom rotation angle	90° (+75/-15)	
Turntable rotation	360° continuous	
Tailswing	3 ft 7 in	
D Wheelbase	8 ft 2 in	
E Ground clearance	14 in	
Tilt alarm	5°	
Drive speed	0.3 - 4.0 mph	
Gradeability	40 %	
Turning radius - outside	20 ft 8 in	11 ft 2 in
Tires	385/65 - 22.5	
Engine	TIER 4 final Kubota 36.5 kW - 48.9 hp	DUAL FUEL Kubota 46 kW - 62 hp
Weight	25,776 lbs	25,953 lbs



STANDARD EQUIPMENT

- Universal telematics plug
- Haulotte Activ'Shield™ Bar 2.0
- 4 wheel drive / 2 (O) or 4 (PRO) wheel steer
- Automatic differential wheel lock increase rough terrain capacity
- Front oscillating axle increases stability on uneven ground
- Proportional controls enhance comfort and safety
- 4 simultaneous movements for maximum productivity
- 500 lbs load capacity unrestricted working envelope
- Large modular basket, drop entry gate
- Upper control box protection cover and tool tray in ultra-solid composite
- Prepared for power to platform 110 / 230 V
- Basket limitation +/- 50°
- ACTIV'Screen onboard colored monitor screen and diagnostic system
- Swing out engine tray for easy maintenance
- Hour meter
- Low fuel level indicator (upper control box)
- Engine pre-heater with light indicator
- Sound and light alarm for tilt and load
- Maximum wind speed 28 mph
- 12 V battery
- Electric pump system and emergency descent
- Rotating beacon
- Driving alarm

OPTIONS AND ACCESSORIES

- Dual load capacity 500 lbs / 1000 lbs (2 / 3 persons)
- Narrow modular platform
- Lateral Swing door entry gate (Standard on US machines)
- Power to platform (Female plug in the basket with or without circuit-breaker 30mA)
- 37 mph wind speed
- 3.5 kW, 635 kW, 12 kW (Only NA) hydraulic generator
- Pipe cradle pack
- Glazier pack
- Warm environment kit
- Cold weather package / Kit Arctic
- Biodegradable hydraulic oil
- Air line to platform 1/2 inc inner diameter
- Working lights
- Haulotte Activ'Shield™ Bar 2.0