

SJ45 AJN/ARJN

ELECTRIC ARTICULATING BOOMS



STANDARD FEATURES

- EASYDRIVE™ Direction sensing drive and steer controls
- SKYRISER™ True vertical rise
- Direct AC electric drive
- Dual spring applied, electromagnetically released brakes
- Speed and angle sensing traction control
- Drivable at full height
- 30% Gradeability
- SKYCODED™ color coded control system
- 48V 360 Ah Battery pack
- Swing out battery trays
- Swing out cowlings for easy access
- Proportional controls
- Function speed selector
- Rotating jib (SJ45 ARJN)
- Bolt-in platform railing system
- Lanyard attachment points
- Side-entry sliding mid rail
- Secondary Guarding Electrical (SGE)
- Overload sensing system
- 110V AC Outlet on platform with GFI
- Tilt alarm (3.0° x 2.0°) with drive and lift cut-out
- Powered emergency lowering
- Hourmeter
- Operator horn
- All motion alarm
- 355° Non-continuous turret rotation
- Tie down/lifting lugs
- Solid rubber, non-marking tires
- Telematics ready
- 2 Year Gold Leaf Warranty (5 year structural warranty)



- Zero emissions



- <70 dB inherently quiet machine operation (excl. alarms)
- White noise alarm – *optional*



- 90% recyclable (by weight)



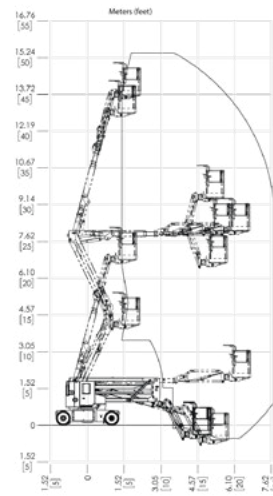
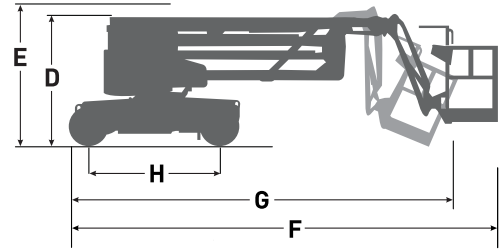
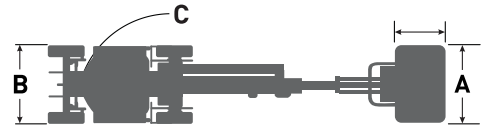
- Bio-degradable hydraulic oil – *optional*



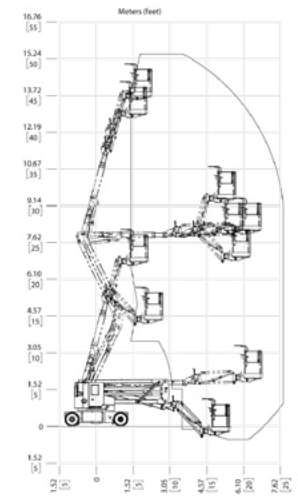
- Telematics – Remote diagnostics reduces site visits (operational carbon foot print)

SJ45 AJN/ARJN ELECTRIC ARTICULATING BOOMS

Dimensions	SJ45 AJN	SJ45 ARJN
Work Height	50' 11" (15.52 m)	50' 11" (15.52 m)
Platform Height	44' 11" (13.69 m)	44' 11" (13.69 m)
Horizontal Reach	22' 4" (6.81 m)	22' 7" (6.88 m)
Up and Over Height	25' 5" (7.75 m)	25' 5" (7.75 m)
A Platform Size	30" x 58" (0.76 x 1.47 m)	
B Stowed Width	4' 11" (1.5 m)	4' 11" (1.5 m)
C Tailswing	6" (0.15 m)	6" (0.15 m)
D Stowed Height	6' 6" (1.98 m)	6' 6" (1.98 m)
E Transport Height	6' 6" (1.98 m)	6' 6" (1.98 m)
F Stowed Length	20' 10" (6.35 m)	21' 1" (6.43 m)
G Transport Length	19' 10" (6.04 m)	20' 1" (6.12 m)
H Wheelbase	6' 7" (2 m)	6' 7" (2 m)
Ground Clearance	3" (7.6 cm)	3" (7.6 cm)
Specifications	SJ45 AJN	SJ45 ARJN
Turret Rotation	355° NC	355° NC
Platform Rotation	175°	175°
Jib Length	4' 8" (1.42 m)	4' 8" (1.42 m)
Jib Range of Motion - Vertical	145° (+75° / -70°)	145° (+75° / -70°)
Jib Range of Motion - Horizontal	N/A	180°
Weight	15,064 lbs (6,833 kg)	16,000 lbs (7,258 kg)
Gradeability	30%	30%
Turning Radius (Inside)	3' 8" (1.12 m)	3' 8" (1.12 m)
Turning Radius (Outside)	11' (3.35 m)	11' (3.35 m)
Drive Speed (Stowed)	3 mph (4.8 km/h)	3 mph (4.8 km/h)
Drive Speed (Elevated/Extended)	0.4 mph (0.6 km/h)	0.4 mph (0.6 km/h)
Capacity	500 lbs (227 kg)	500 lbs (227 kg)
Local Floor Load (With Rated Load)	TBD	TBD
Overall Floor Load (With Rated Load)	TBD	TBD
Maximum # of Persons (Indoors/Outdoors)	2 / 1	2 / 1
Wind Rating	28 mph (12.5 m/s)	28 mph (12.5 m/s)
Tire Type	Solid, NM	Solid, NM
Tire Size	600 x 190	600 x 190



SJ45 AJN WORKING ENVELOPE



SJ45 ARJN WORKING ENVELOPE

OPTIONS[†]

- AGM batteries
- Side spring hinged entry gate
- Bio oil
- Non destructive testing
- Flashing light
- White noise alarm
- ELEVATE telematics

ACCESSORIES[‡]

- Tool Caddy
- Control box cover
- LanyardGO

Skyjack Head Office

55 Campbell Rd. Guelph, ON Canada N1H 1B9
 Sales Inquiries: 1-877-755-4387 (1-877-SJLIFTS)
 Main Switchboard: 1-800-265-2738
 Phone: 519-837-0888
 Fax: 519-837-8104
 Email: skyjack@skyjack.com

www.skyjack.com

[†] Standard lead times may be increased when optional equipment is added, consult factory.
[‡] Capacities and machine weights may differ when accessories and options are added.

